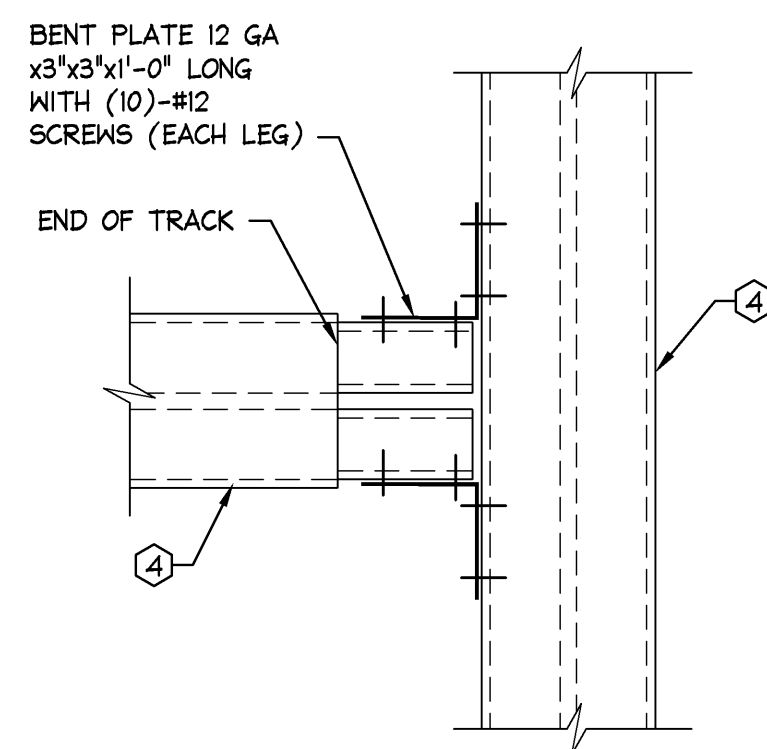


NOTE:
SEE DRAWING SOI.1
FOR CODED NOTES

CONNECTION DETAIL

$$\underline{3'' = 1' - 0''}$$

S

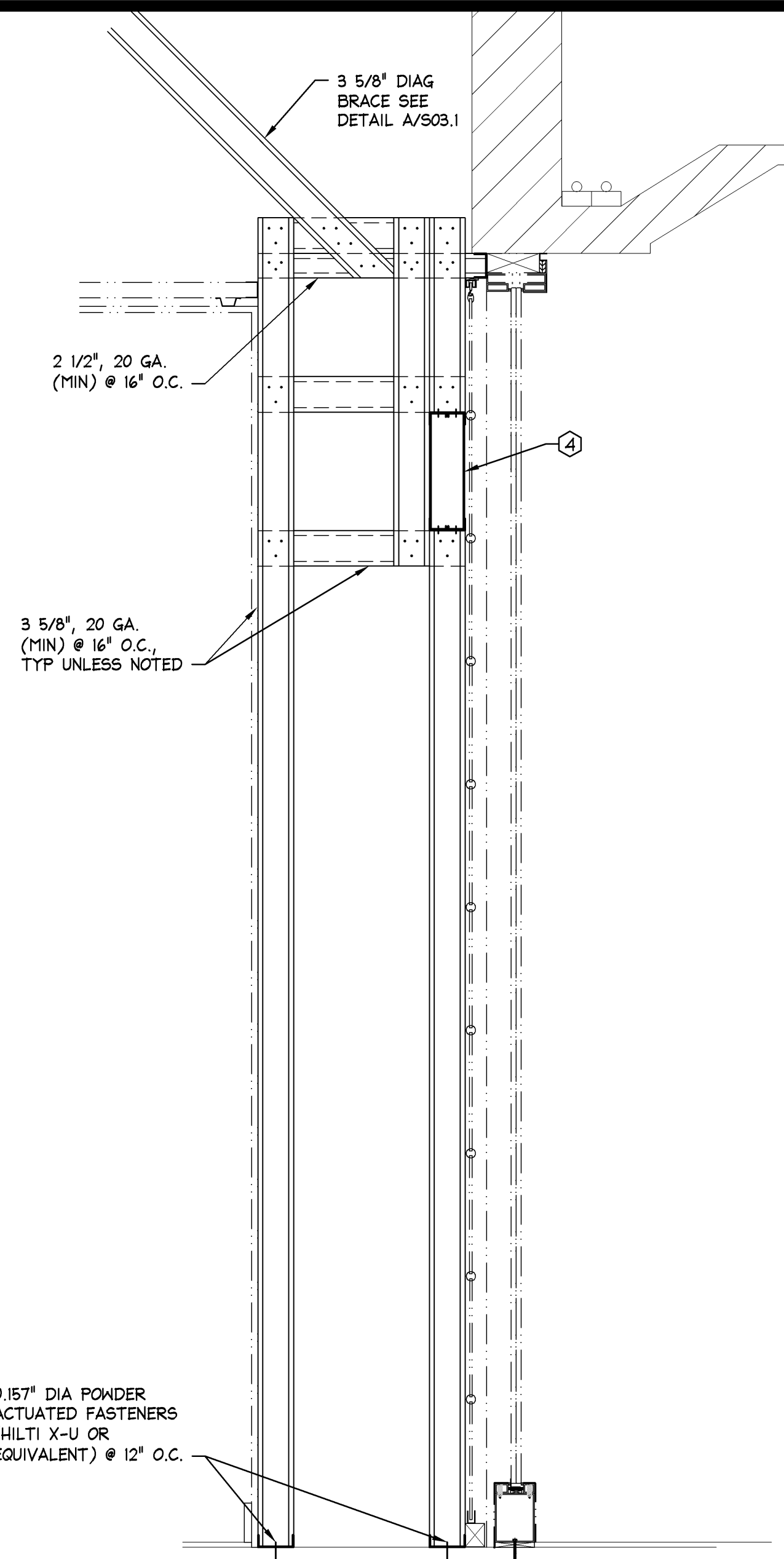


NOTE:
SEE DRAWING SOI.
FOR CODED NOTES

CONNECTION DETAIL

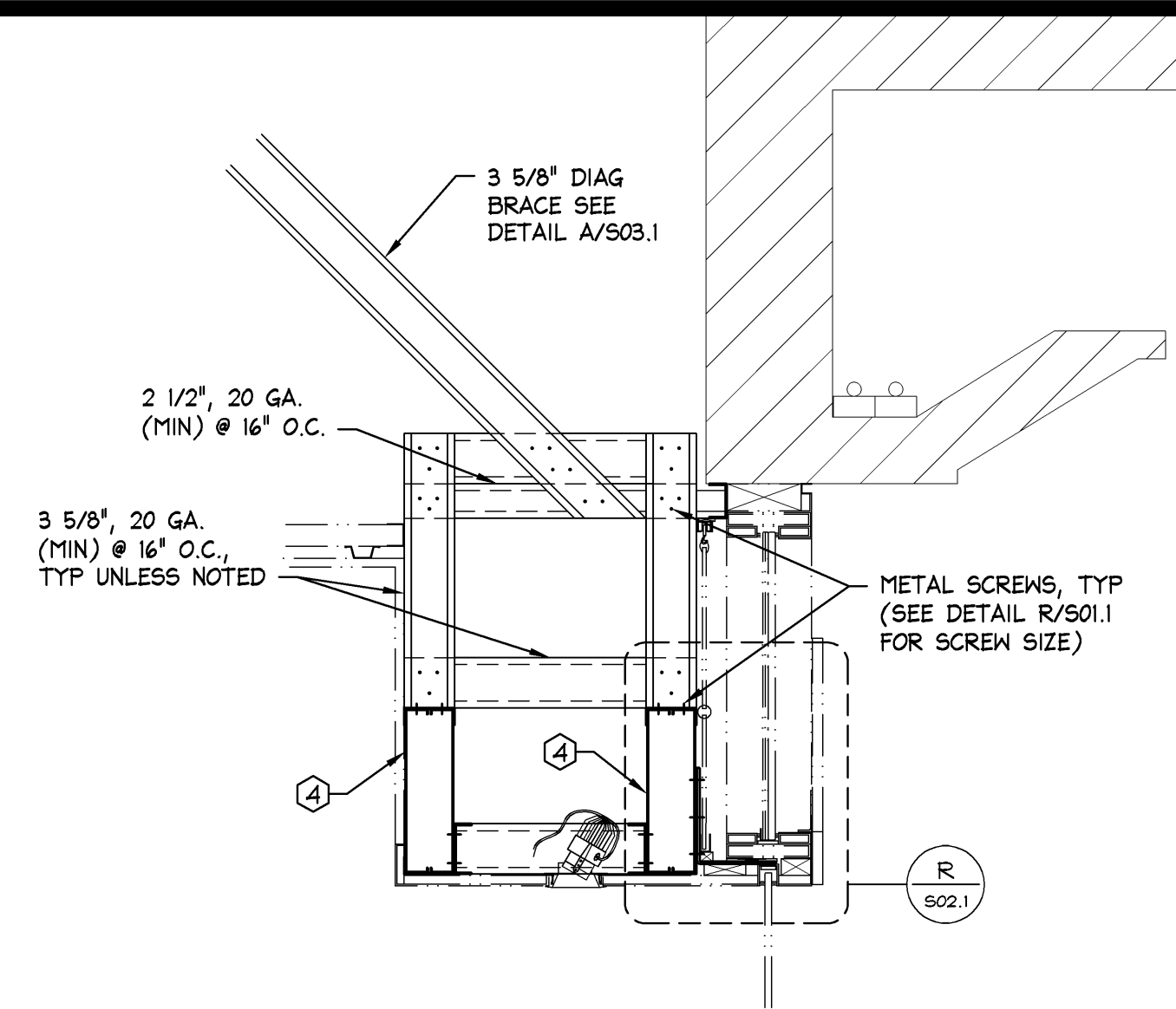
$$\underline{3''=1'-0''}$$

M



NOTE:
SEE DRAWING S01.1
FOR CODED NOTES

STOREFRONT SECTION

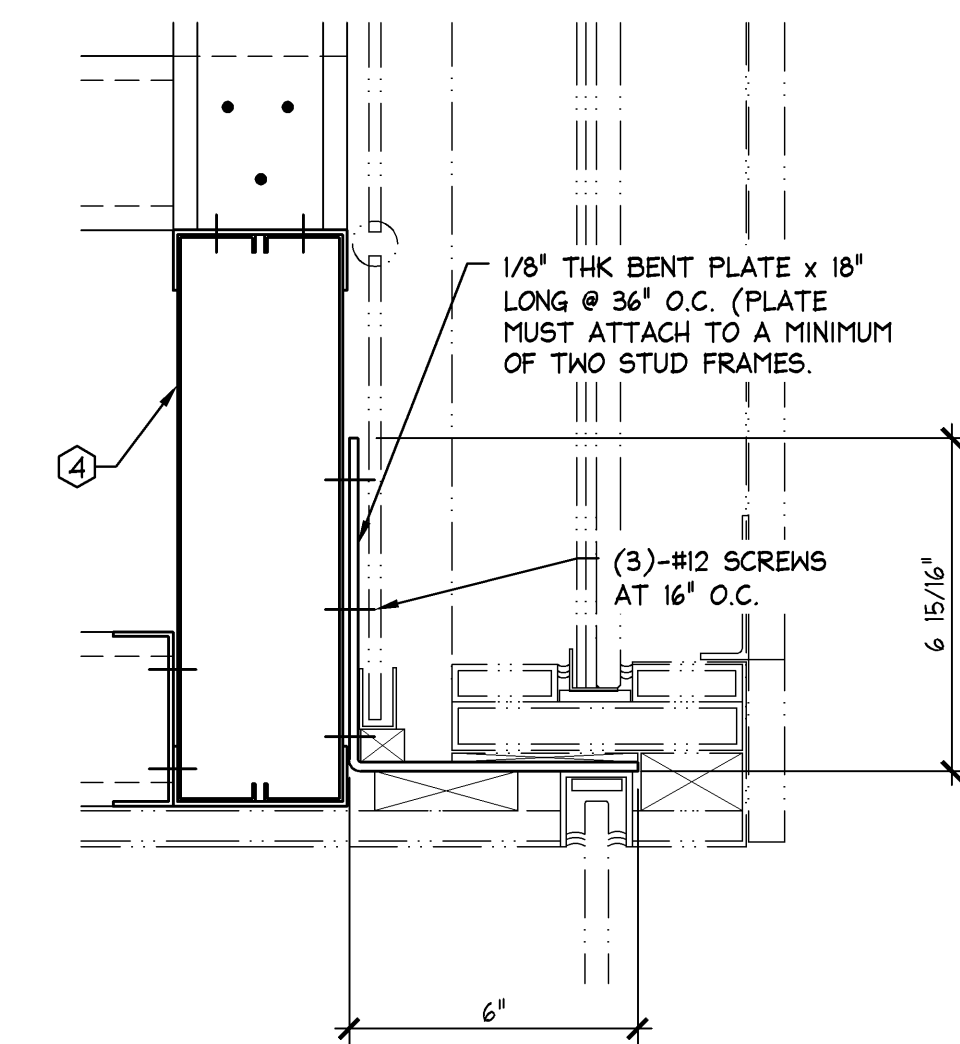


NOTE:
SEE DRAWING S01.
FOR CODED NOTES

STOREFRONT SECTION

$$\frac{1'' = 1' - 0''}{--}$$

D

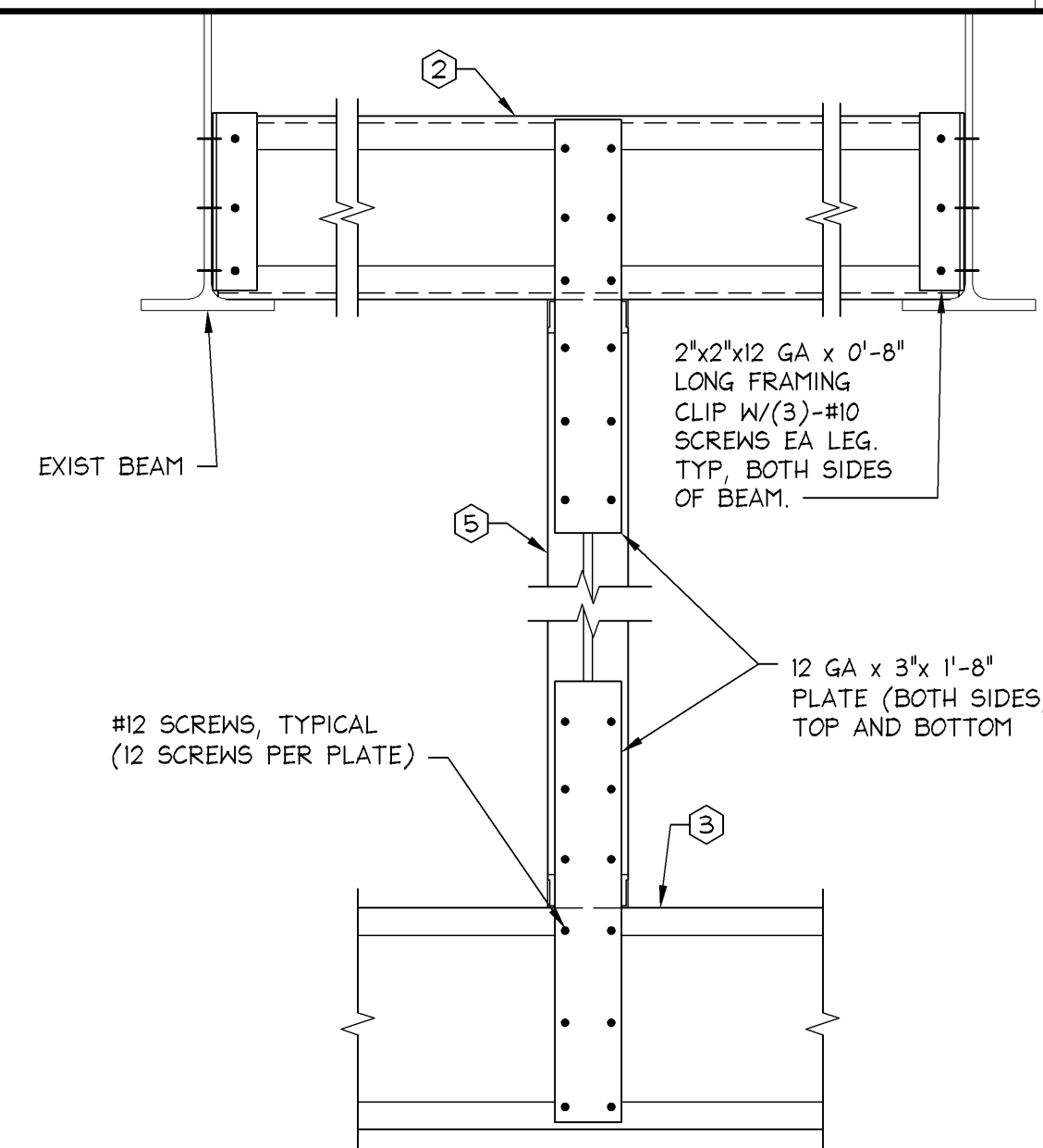


NOTE:
SEE DRAWING S01.1
FOR CODED NOTES

CONNECTION DETAIL

$$\underline{3'' = 1'-0''}$$

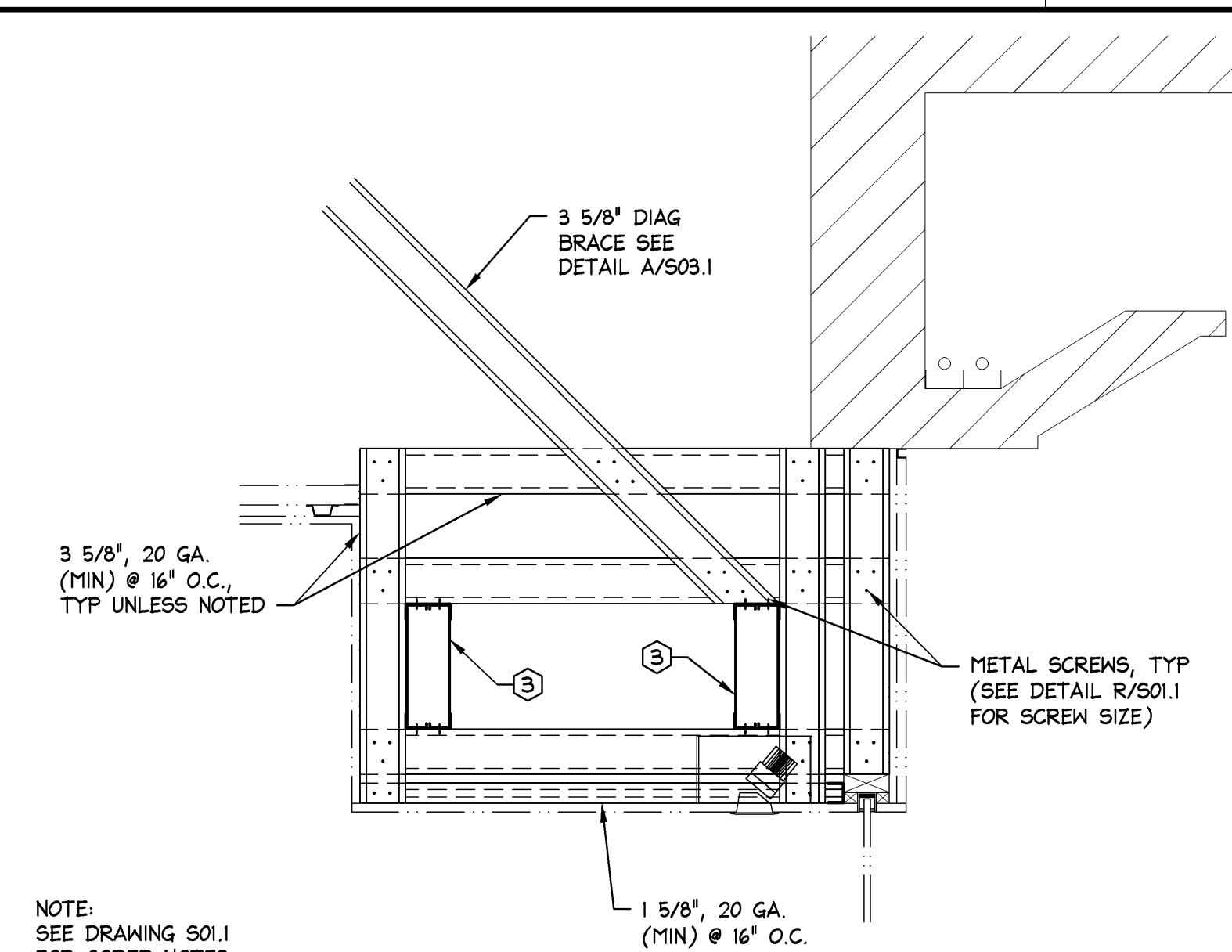
R



STOREFRONT SECTION

22

L

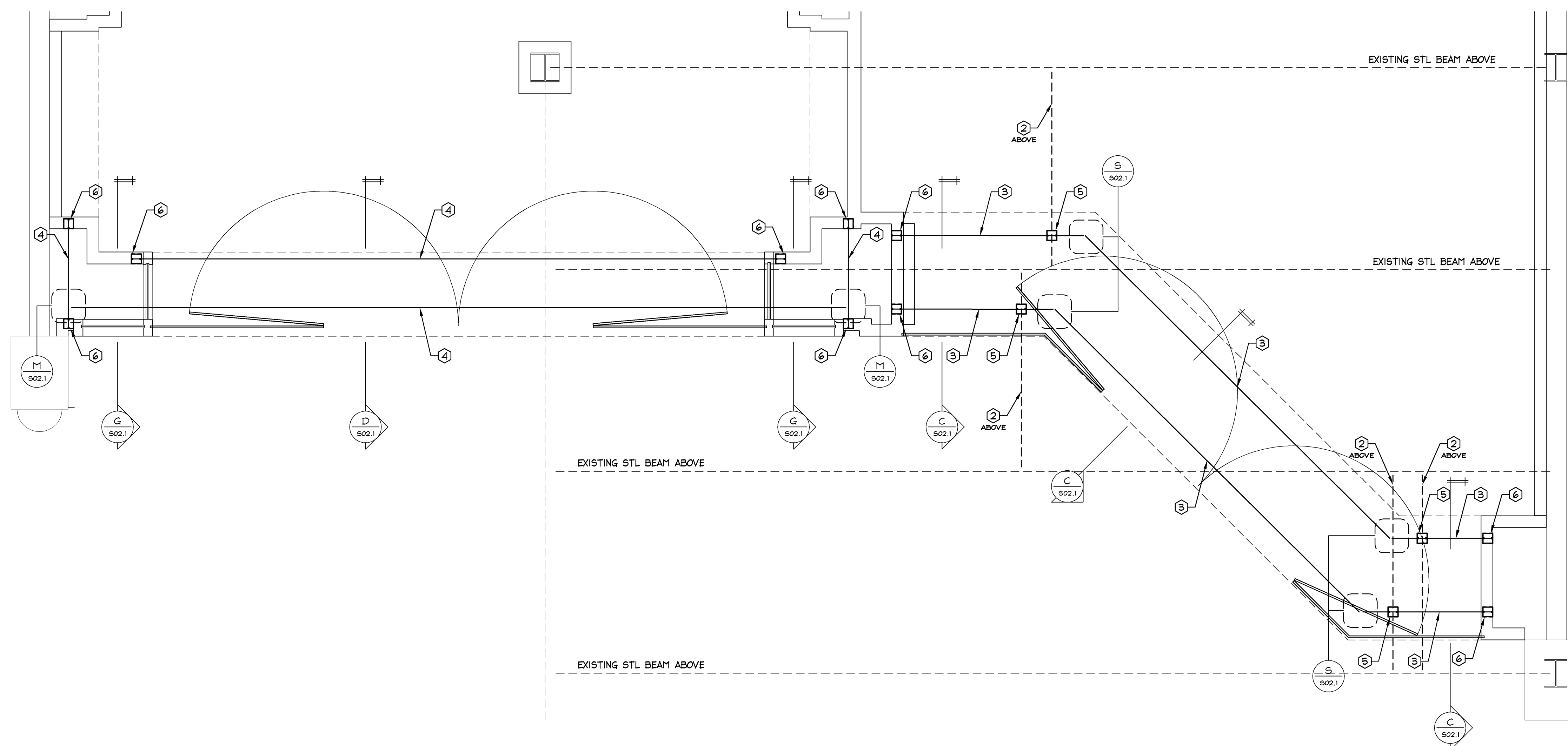


NOTE:
SEE DRAWING S01.
FOR CODED NOTES

TYPICAL BLOCKING AT ROLLING GRILLE

N.T.S.

C



NOT USED

— —

— —

N

PARTIAL STOREFRONT FRAMING PLAN

$$\frac{1}{2}'' = 1'-0''$$

A

PAUL J FORD AND COMPANY
250 EAST BROAD STREET
SUITE 600
COLUMBUS, OHIO 43215
614-221-6679
A26614-0006

KEVIN P. BAUMAN
REG. No. 49756
CORPORATE REG No. EB0002848

Limited brands

LIMITED STORE PLANNING, INC.
d/b/a STORE DESIGN & CONSTRUCTION
Three Limited Parkway • Columbus, Ohio 43230
Telephone: 614.415.7000 • Fax: 614.415.7349

[illegible]

PROJECT INFORMATION:

0142000814

BATH & BODY WORKS

WHITE BARN CANDLE CO.

THE GARDENS MALL

3101 PGA BOULEVARD

PALM BEACH GARDENS, FL 33410

SCOPE:

DESIGN TYPE:

LSD&C PROJECT #:

FAST RENO

EASTON-G

00061214

PACKAGE:

GENERATION:

A/E PROJECT #:

1+

141Sq

14286

REVISIONS:

REQUIRED BY:	DATE:

ELITE CONSTRUCTION GROUP
LAKE JACKSON, TX
PHONE: 979-285-0712
NOTE: THESE PRINTS HAVE BEEN
REDUCED BY 50 PERCENT. SCALE
WILL BE 50 PERCENT OF WHAT IS
NOTED ON PLANS

DATE ISSUED: 10/24/2014
DESIGNED BY: SLH
DRAWN BY: SMA
CHECKED BY: GDK

STOREFRONT FRAMING PLAN AND SECTIONS

DRAWING NUMBER:
S02.1